

Soyo Link Energy

Company Profile

By Rosa Huang
2012. 02. 01



Soyo Link Energy Co.,Ltd.
www.soyolink.com



Soyo Link Energy is a Taiwan Company, with strong R&D and Sales teams in TaoYuan near CKS International Airport, and Joint Venture Factory of over 850 staff in China.

Taiwan Headquarter



China Office & Factory



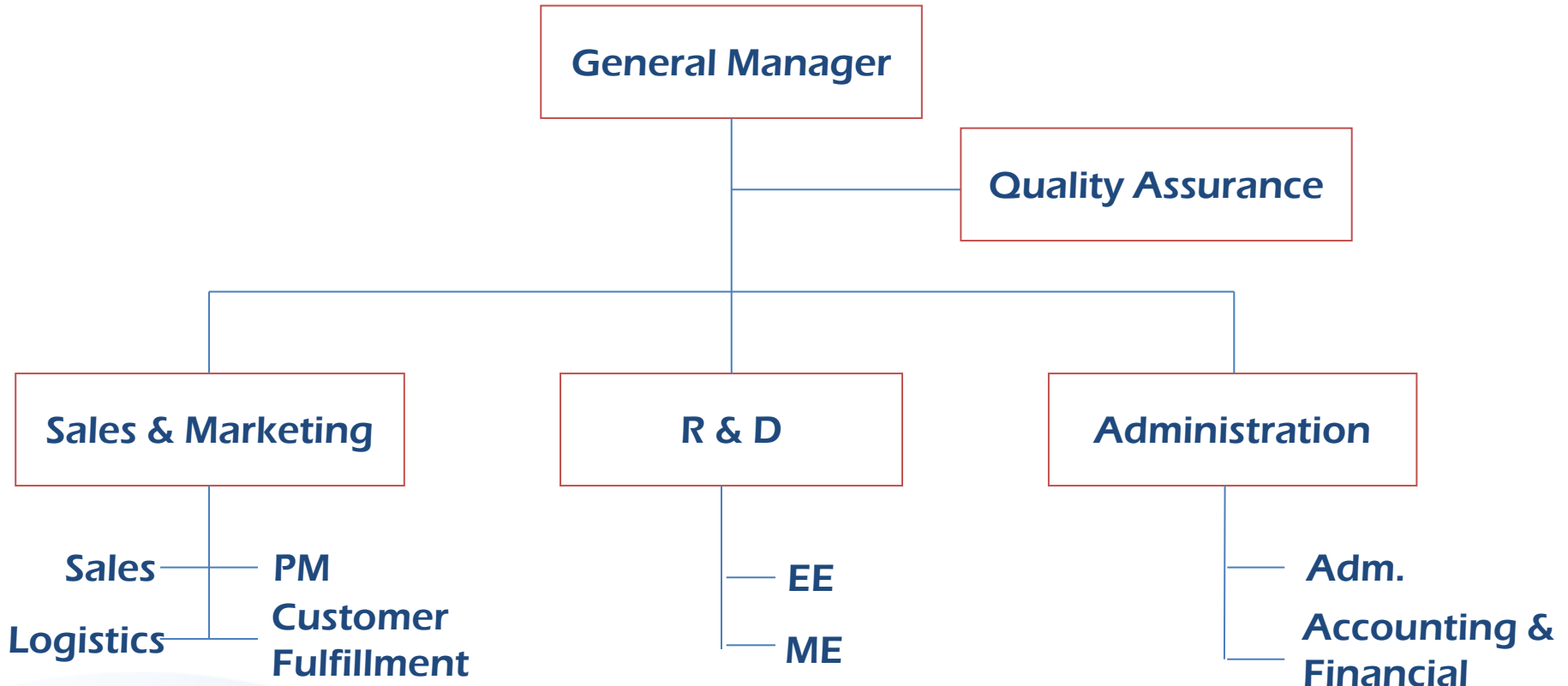
Soyo Link Energy Co.,Ltd.
www.soyolink.com

About SOYO LINK

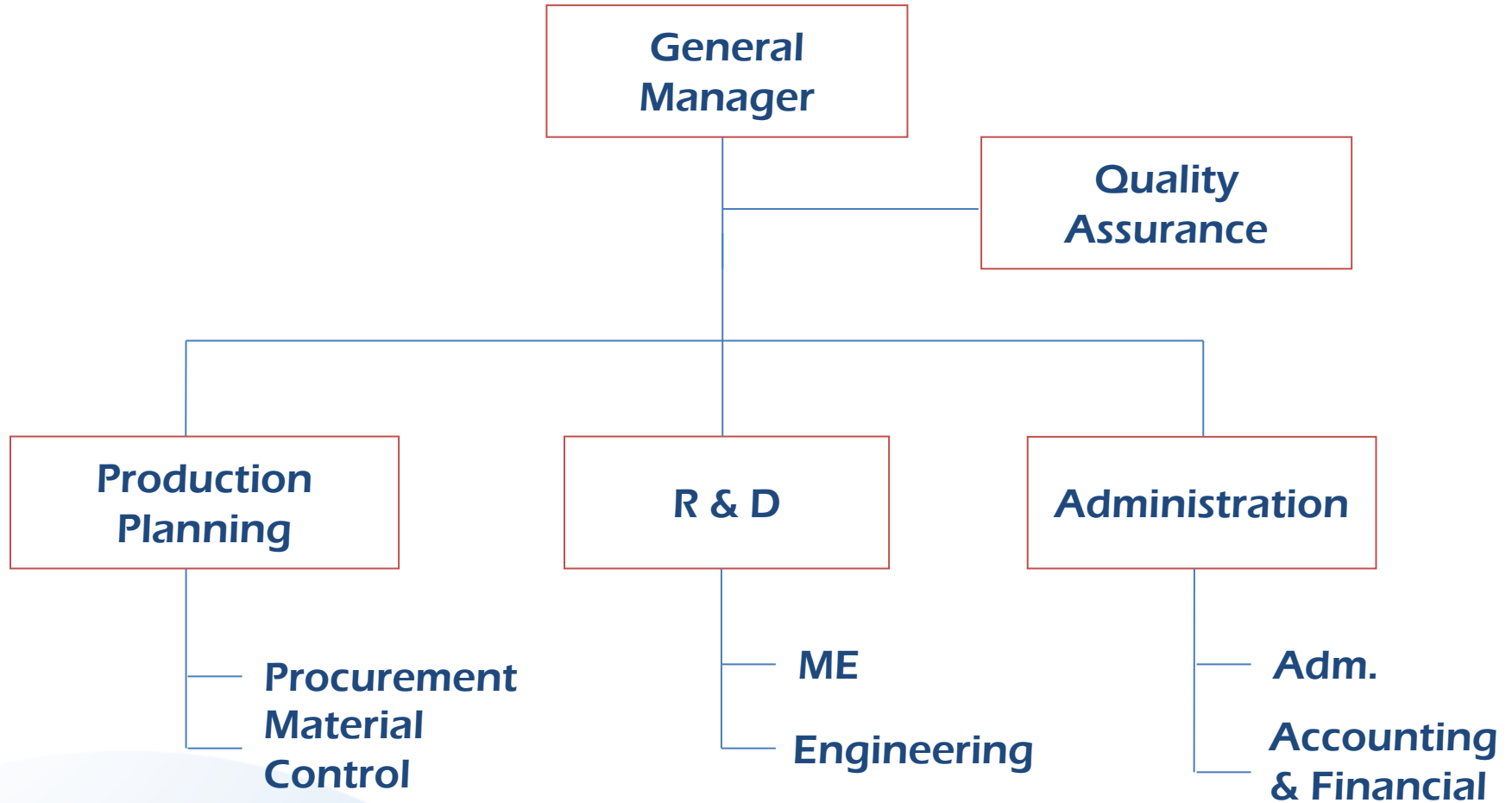
- Over 6 years Experiences of PV Markets
- Strong and Active R&D Team to Make Quick & Innovative Activities
- Customer-Oriented Strategy and Service to Back Customers Up to Win
- Products:

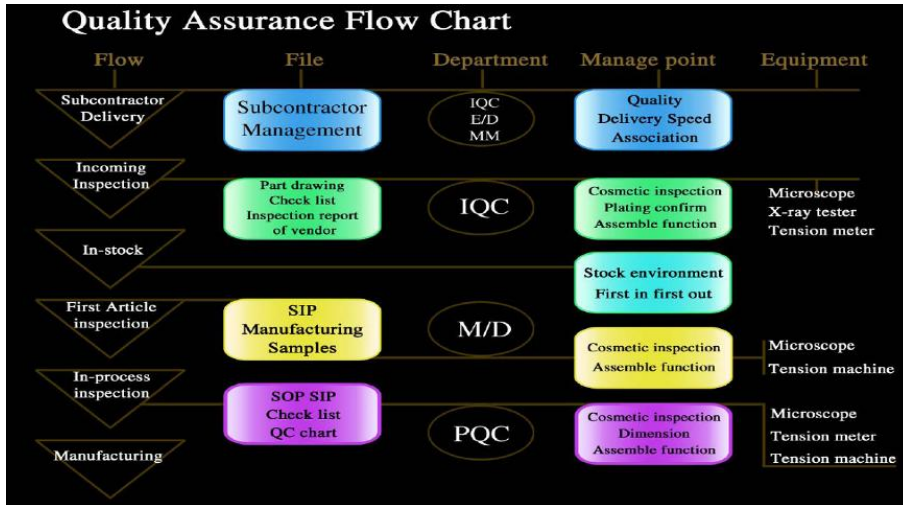
Total Solution for PV System Installation and Power Management

Soyo Link Energy (Taiwan)



Soyo Link-A (Dongguan, China)



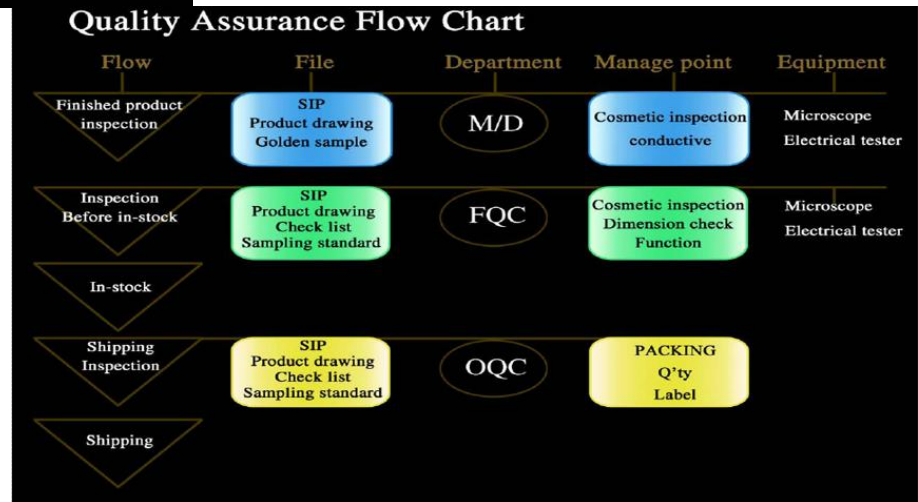


Soyo Link Energy
insists
strict quality control

Ejection/Molding/Stamping

/Assembly

one shop ability



Soyo Link Energy provides
total solution for
PV system installation and power management.
All of the products designed to reach the goal of

High efficiency

High quality

Easy installation

BOS cost down



Soyo Link Energy opens for *OEM* and *ODM* cooperation, and develops *our own brand* facilities and accessories including,

DC/AC Connectors

Customized Branch Connectors

Cable Assemblies

Protectors (Blocking & Fuse Connectors)

Crimping/Stripping/Cutting Tools

Power Controlling Device

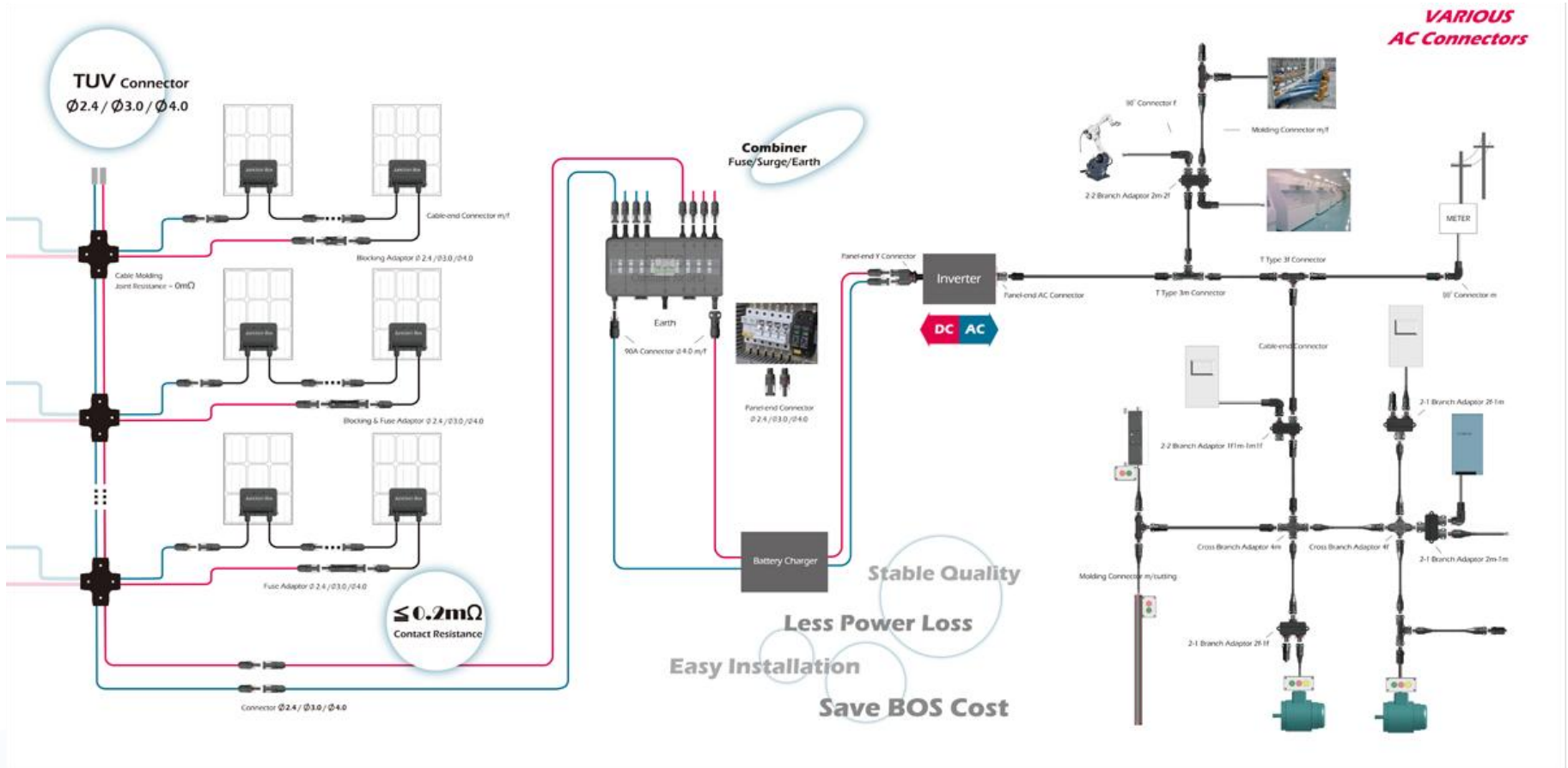
Smart Power Manager

(Monitoring & Controlling of Power System)

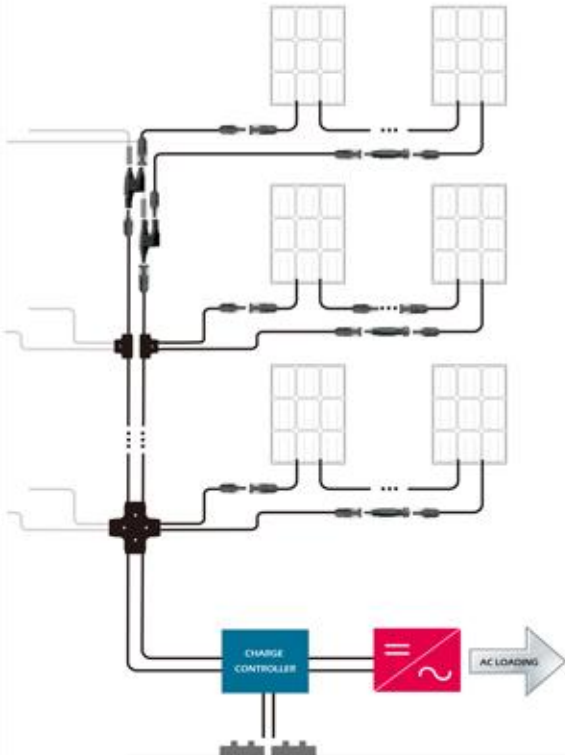
Small Scale Stand-Alone System Kit



Products Application – DC/AC Power System Installation



PV SYSTEM APPLICATION



**PV System
Installation & Application**

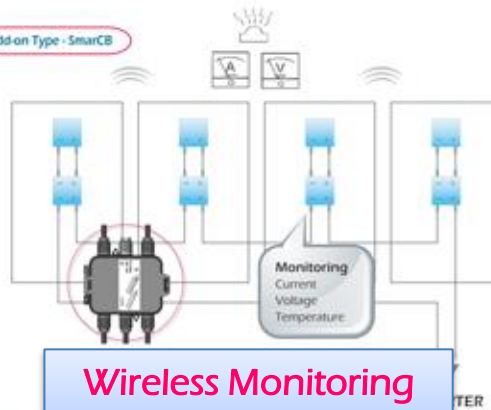
SmarJB & SmarCB

The most intelligent junction box with
power management and monitoring functions

Embedded Type - SmarJB

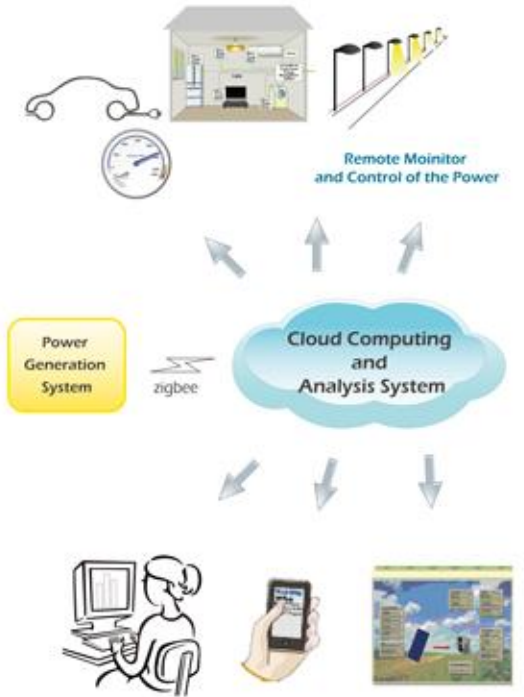


Add-on Type - SmarCB



**Wireless Monitoring
System**

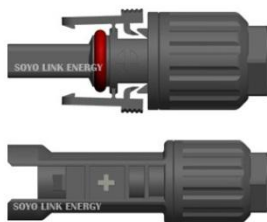
SMART POWER-SAVING MANAGEMET



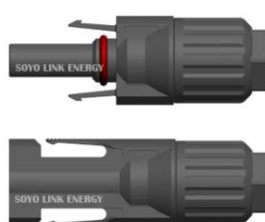
**Smart Power Control & Cloud
Computing /Analysis System**

PV Connectors

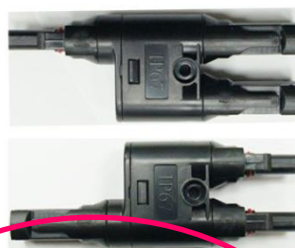
$\phi 2.4\text{mm}$



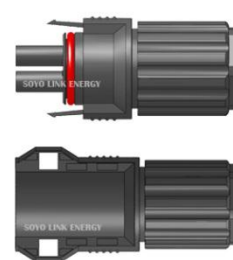
$\phi 3.0\text{mm}/4.0\text{mm}$



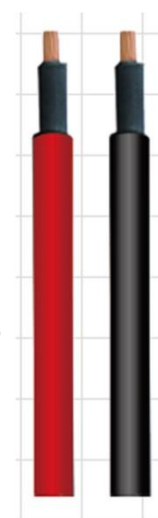
Branch Connector



AC Connector



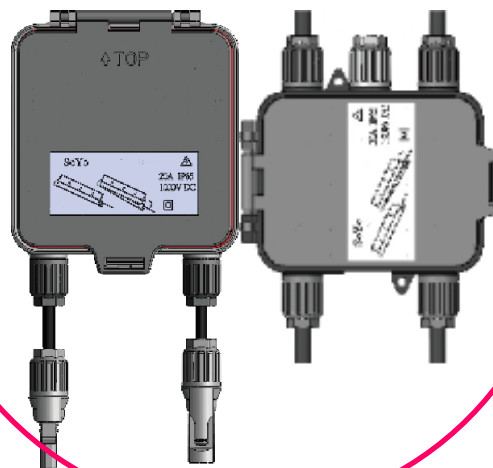
PV Cable



Tool



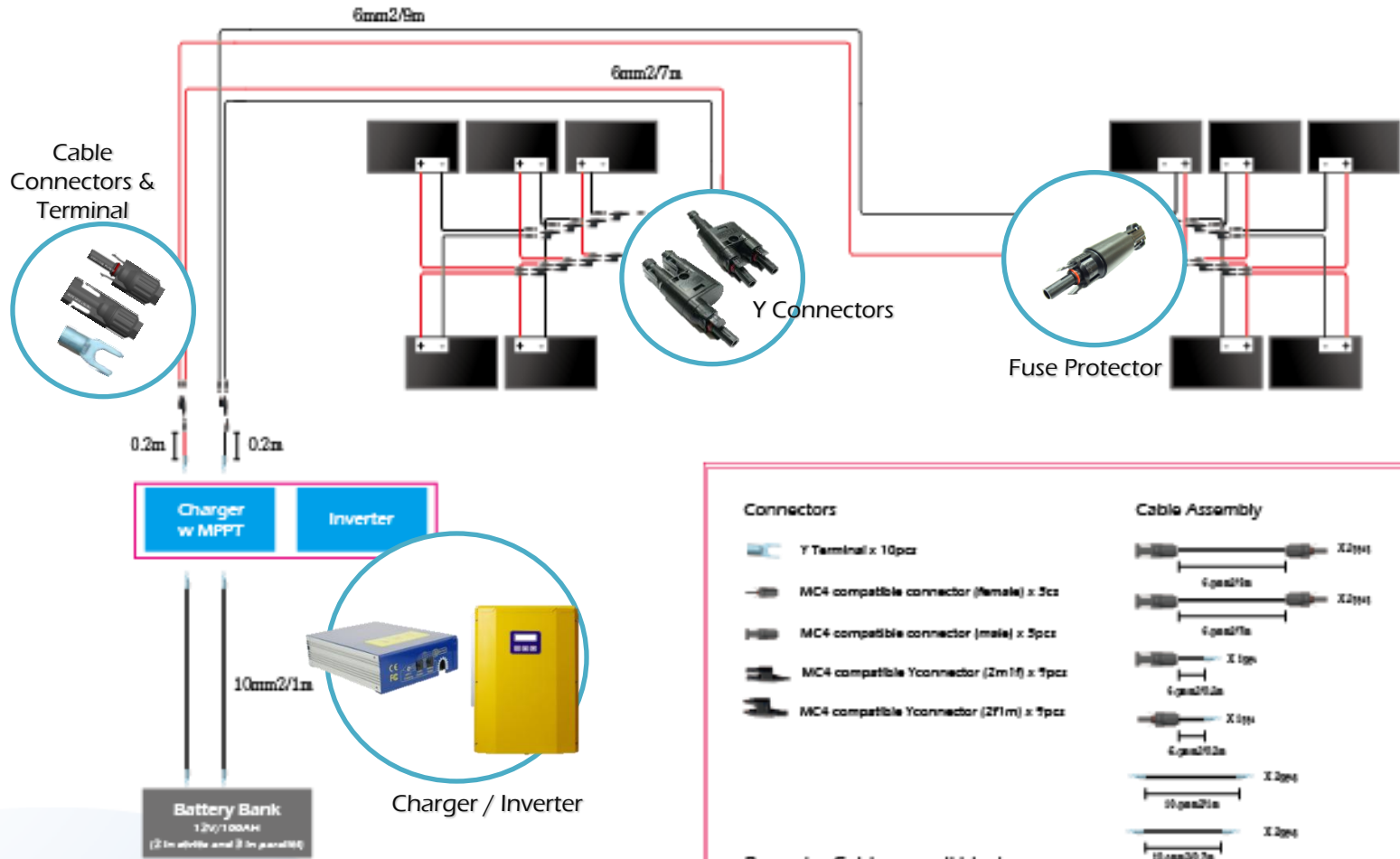
Smart manager device



Fuse Protector



Products Application – Stand-Alone PV System



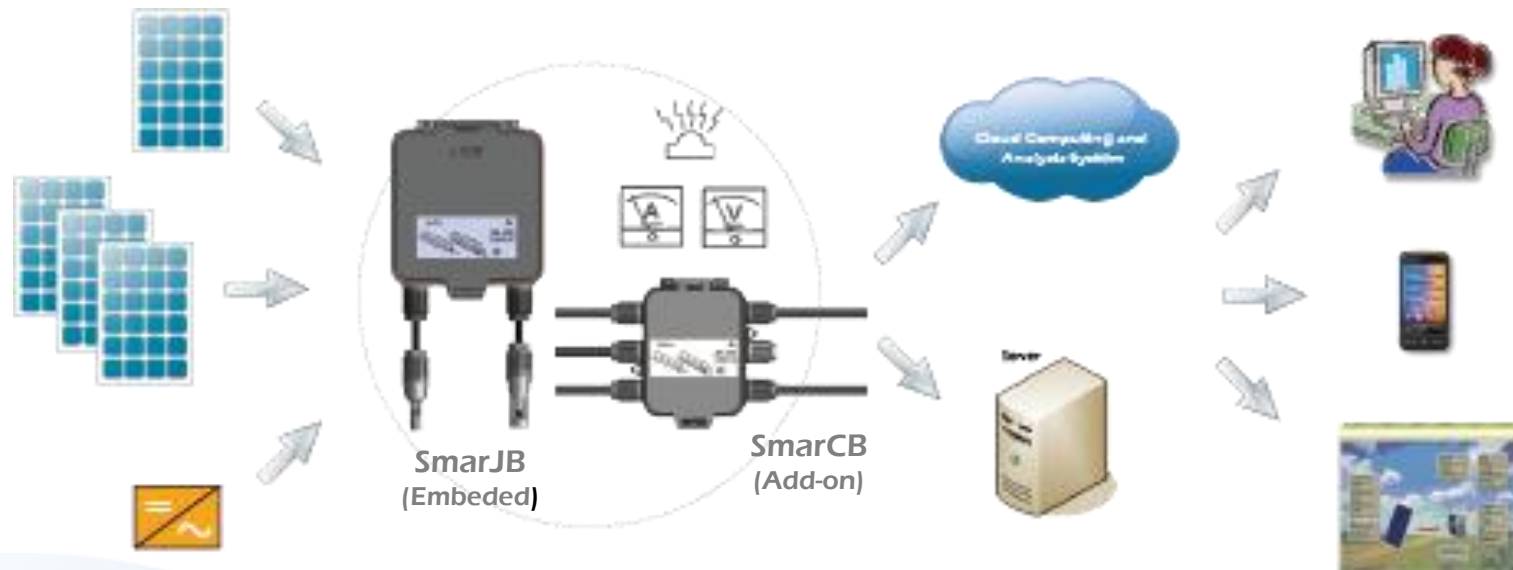
Connectors	Cable Assembly
Y Terminal x 10pcs	X2 type 6.0mm ² /1m
MC4 compatible connector (female) x 5cs	X2 type 6.0mm ² /1m
MC4 compatible connector (male) x 5pcs	X 1 type 6.0mm ² /0.2m
MC4 compatible Yconnector (2m) x 1pcs	X 1 type 6.0mm ² /0.2m
MC4 compatible Yconnector (2.1m) x 1pcs	X 2 type 10.0mm ² /1m
	X 2 type 10.0mm ² /0.7m

Remarks: Cables are all black.

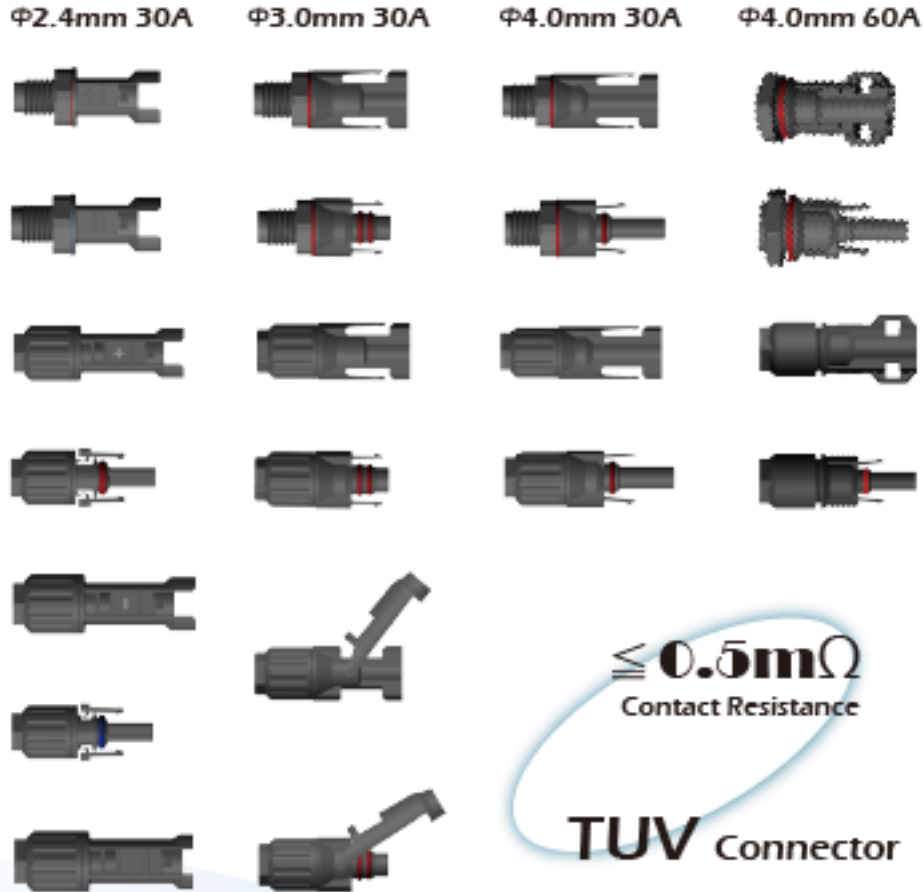
Products Application – Smart Power Management

Smart Power Manager **SmarJB & SmarCB**

Most Intelligent Junction Box with power management and monitoring functions



Main Products – DC Solar Connectors



Least contact resistance

*Minimizing heat rising at rated
current*

Compatible to Tyco+ and MC+

Cable-end & panel-end

IP67 water proof

UL94-V0 flame proof.

Fit to cable 2.5mm², 4.0mm²,

6.0mm², 10mm²

TUV R50199504 approved.

Main Products – DC Y Connectors



Least contact resistance

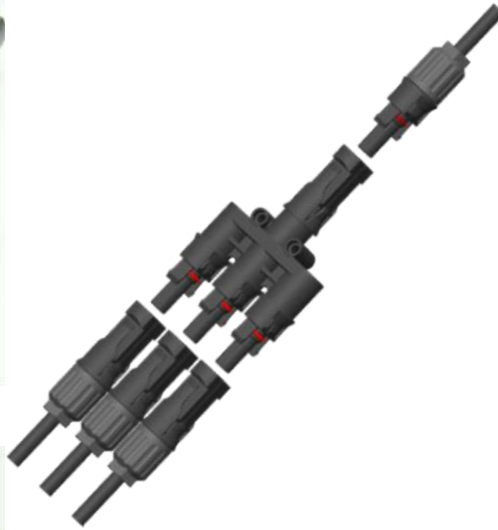
Minimizing heat rising at rated current

Compatible to Tyco & MC4

IP67 water proof

UL94-V0 flame proof

Main Products – Customized Branch Connectors



Handles current up to 30A

Contact Resistance below 0.2m

*Minimizing heat rising at rated
current*

Compatible to Tyco+ and MC+

IP67 water proof

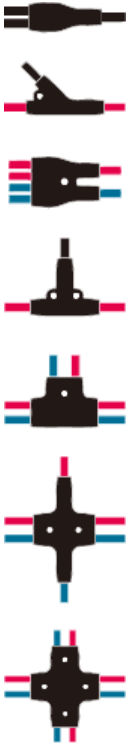
UL94-V0 flame proof.

*TUV R50199504 approved on
each connector.*

*Converts from male to female,
vice versa*

*Customization for customer's
specification*

Main Products – Customized Cable Molding



No power loss

No joint resistance

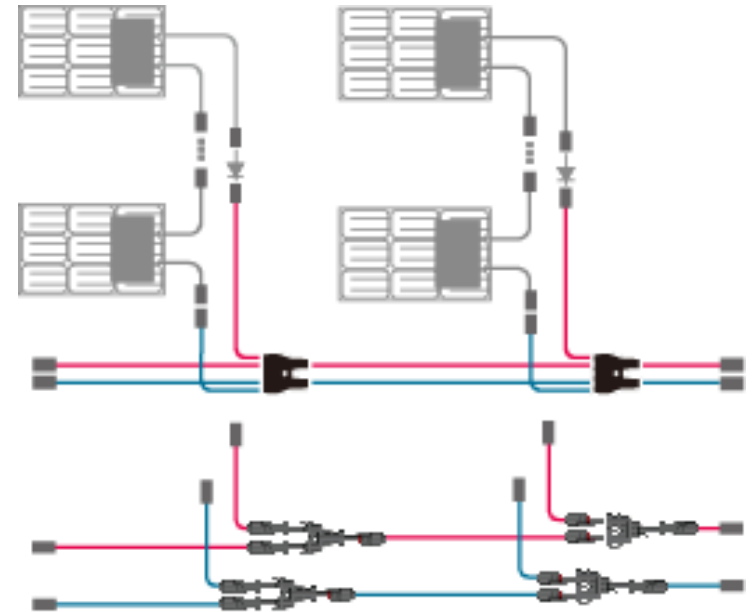
No heat rising

Save BOS cost

No fire spark

IP67 water proof

UL94-V0 flame proof



SOYO 

Soyo Link Energy Co.,Ltd.
www.soyolink.com

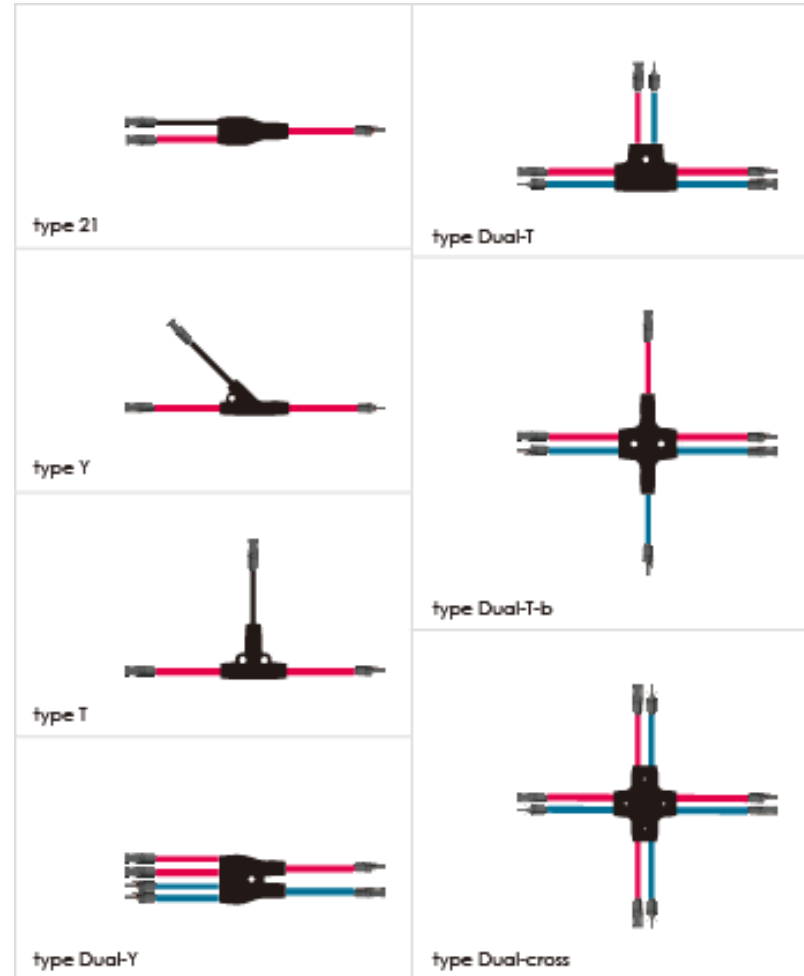
Main Products – Customized Cable Molding

Efficient Wire Interconnection

7 types for different configuration

Cable length by customers request

Tyco & MC compatible solar connectors for options



Main Products – Solar System Protectors (Fuse & Blocking)



Plug and play design easy for installation

Fuse & Blocking inside easily to be changed while breakdown

Least fuse resistance

Least contact resistance

Compatible to MC4 solar connector

IP67 water proof

UL94-V0 flame proof

Main Products – AC Connectors (Cable & Panel Type)

Rated Voltage: **600V**

Rated Current: **30A**

Number of Poles: 4 Poles

IP67 Water Proof

UL94-V0 Flame Proof

Safety Assurance:

Released only by tool



Main Products – Accessory

Terminals



Fastener



Tightening & Dismounting Tool



Buckles



Crimping Tool



Stripping Tool



Cutting Tool



Terminals - compatible to Tyco2.4 and MC3.0, 4.0 connectors

Fastener - Inner diameter: 6.0 mm, 9.5 mm, 13.5 mm, 16.5 mm

Tightening & Dismounting Tool - for AC connectors

φ4.0 mm 90A trunk connector

φ2.4 mm, 3.0 mm, 4.0 mm branch adaptors

φ2.4 mm, 3.0 mm, 4.0 mm connectors

Buckles - For φ2.4 mm, 3.0 mm, 4.0 mm connectors

Crimping Tool - Suitable for

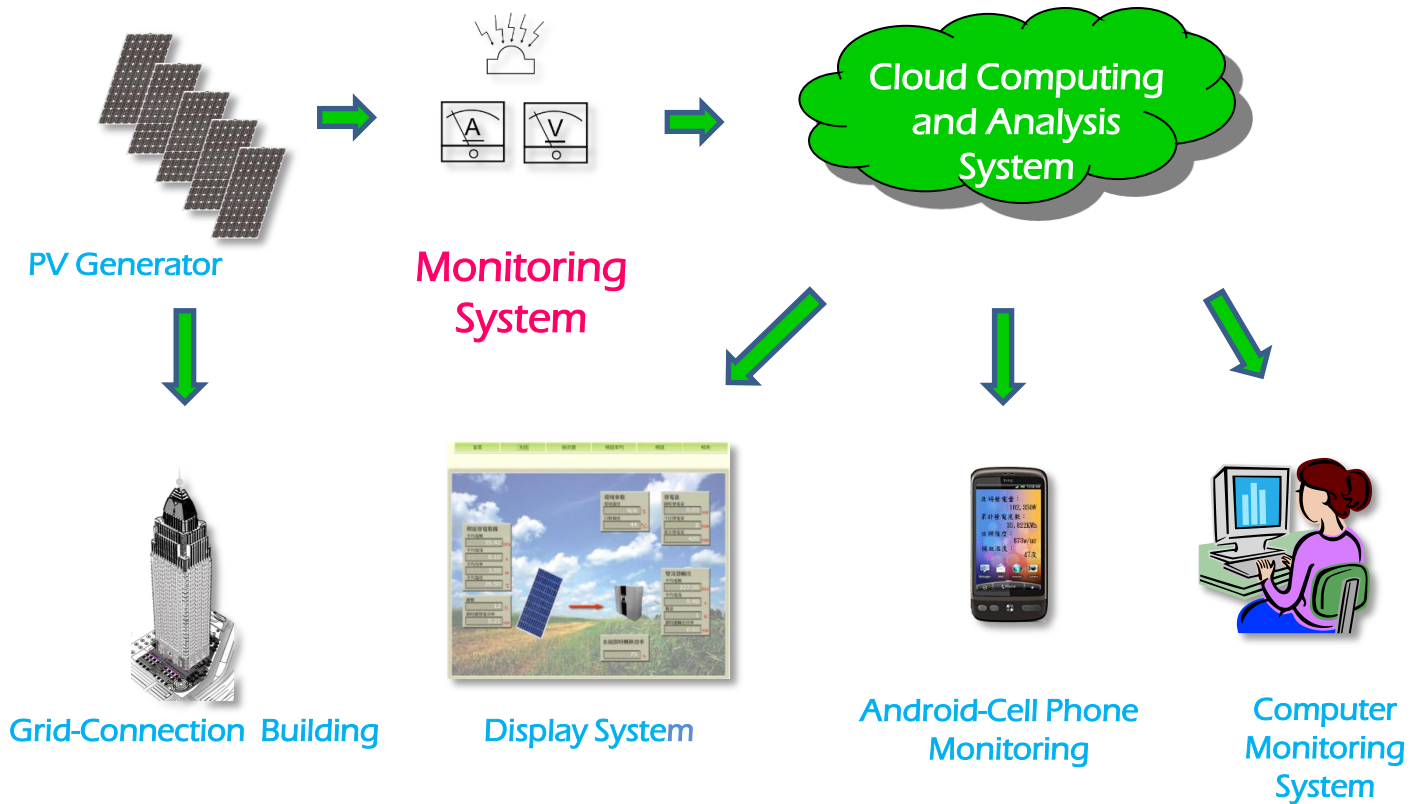
φ2.4 mm, 3.0 mm, 4.0 mm stamping & lathing terminal

Stripping Tool - Suitable for Cable 2.5mm², 4.0mm², 6.0mm²

Cutting Tool - Cuts up to 38 mm² aluminum and copper

Soyo Smart Power Manager

Provide real-time problem Finding > Controlling > Resolving



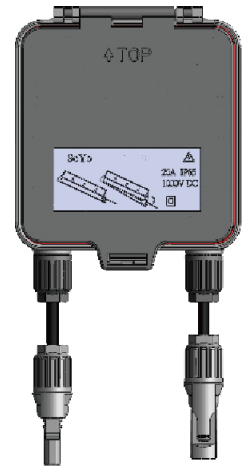
Cloud computing system send out the real-time message as breakdown happened to help maintainer shorten the maintenance time

New Technology Creates Better Life



Soyo Smart Power Manager – Character & Advantage

- ✓ *Real-time Monitoring single or string PV module*
- ✓ *Real-time efficiency analyzing for single or string PV module*
- ✓ *Warning message sent out while unusual*
- ✓ *Indicating the module number and position quickly and exactly as breakdown raising*
- ✓ *Plug & Play design for easy and economical installation*
- ✓ *Integrate the application of PV system monitoring device and Energy Management*
- ✓ *Cloud computing and analysis system to save MIS cost*
- ✓ ***Extend the application of power management***

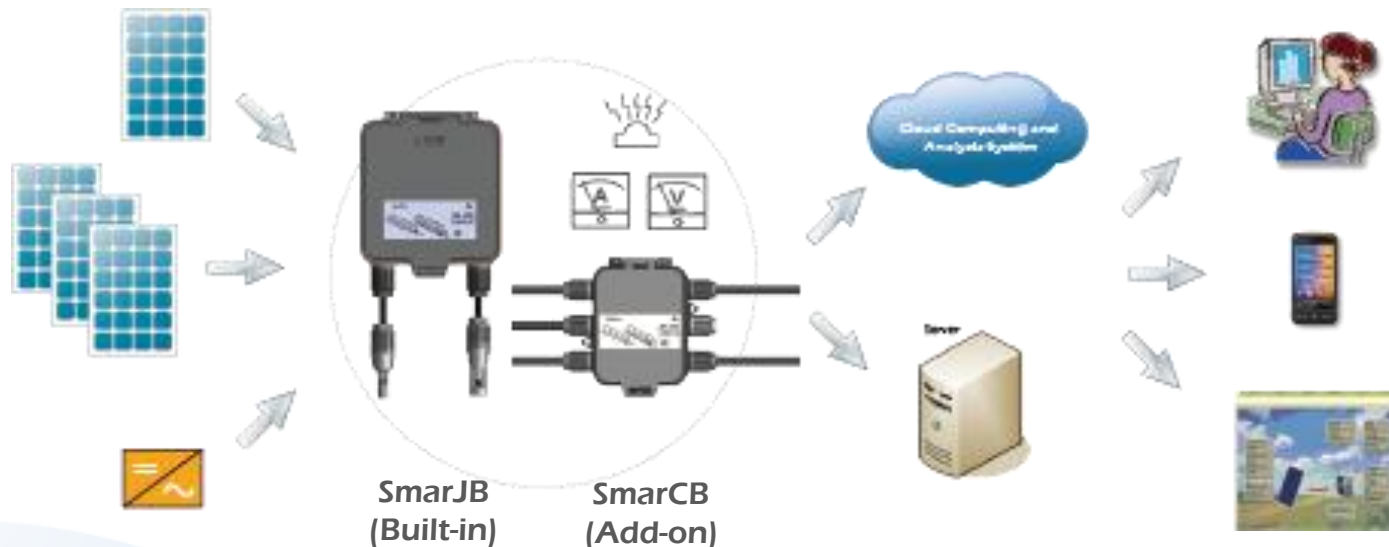


Soyo Smart Power Manager Application – PV Monitoring

SmarJB - Soyo Smart Power Manager is built in Junction Box, not only to replace the traditional Junction box but to provide monitoring function

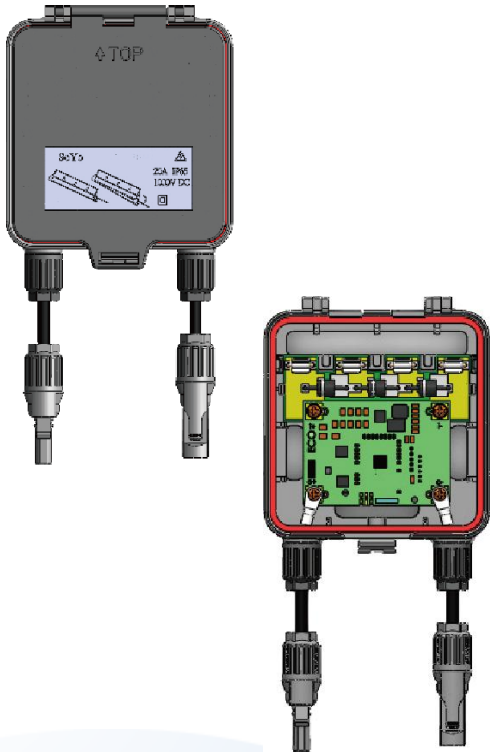
SmarJB (Built-in Type)
SmarCB(Add-on Type)

SmarCB - Soyo add-on Smart Power Manager provides the monitoring function for existed PV system.



SmarJB – Built-in Junction Box

Monitoring module current, voltage, temperature



Input Voltage: DC6V~DC60V

Maximum input current: 12A

Maximum module power 300W

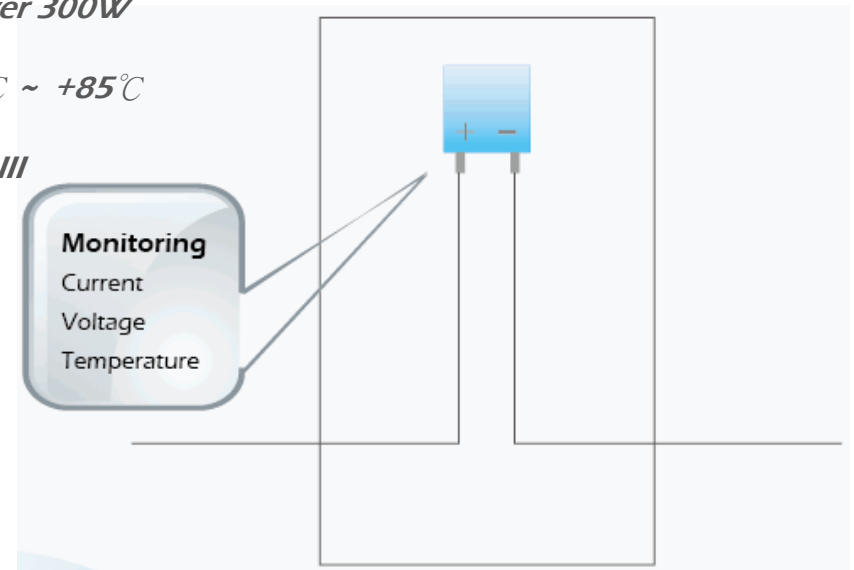
Operation tempt.: -40°C ~ +85°C

Overvoltage category: III

Water Proof: IP65

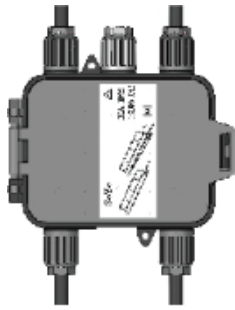
Flame Class: UL94-V0

Build in Monitoring device to Junction Box to replace the traditional one, not only process the module monitoring and efficiency analyzing but also reduce cost



SmarCB – Add-on Type

Monitoring module current, voltage ,temperature



Input Voltage: DC6V~DC60V

Maximum input current: 12A

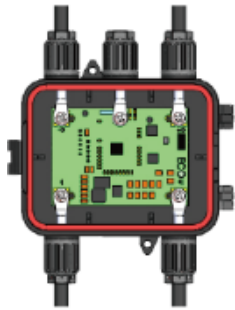
Maximum module power 300W

Operation tempt.: -40°C ~ +85°C

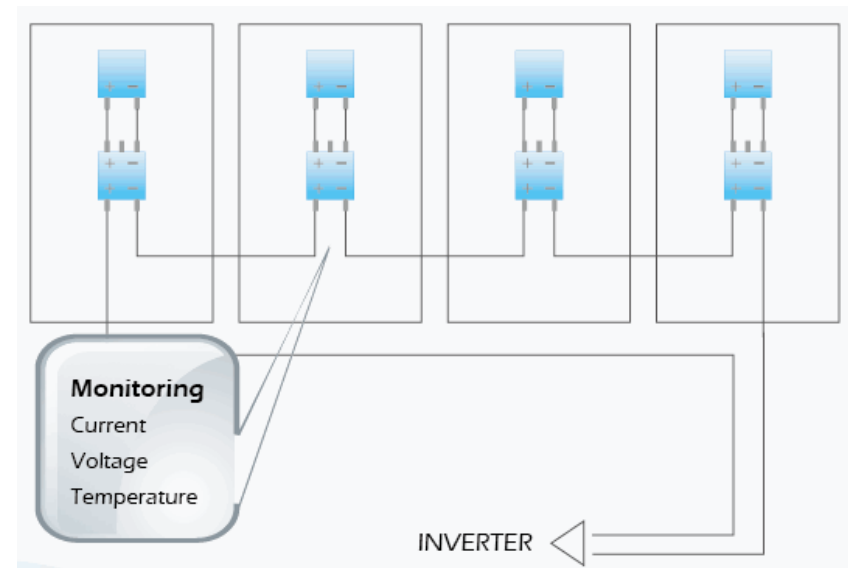
Overvoltage category: III

Water Proof: IP65

Flame Class: UL94-V0

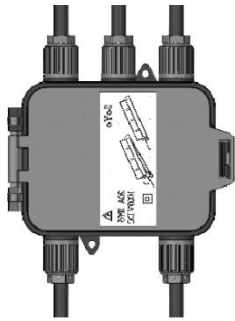


keep the current Junction Box,
Add-on type Monitoring device with plug & play
design for easy and safety installation.



SmarCB – Add-on Type

Monitoring string voltage



Input Voltage: DC850V

Maximum input current: 12A

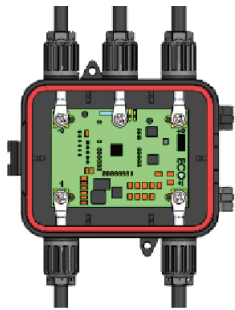
Maximum module power 300W

Operation tempt.: -40°C ~ +85°C

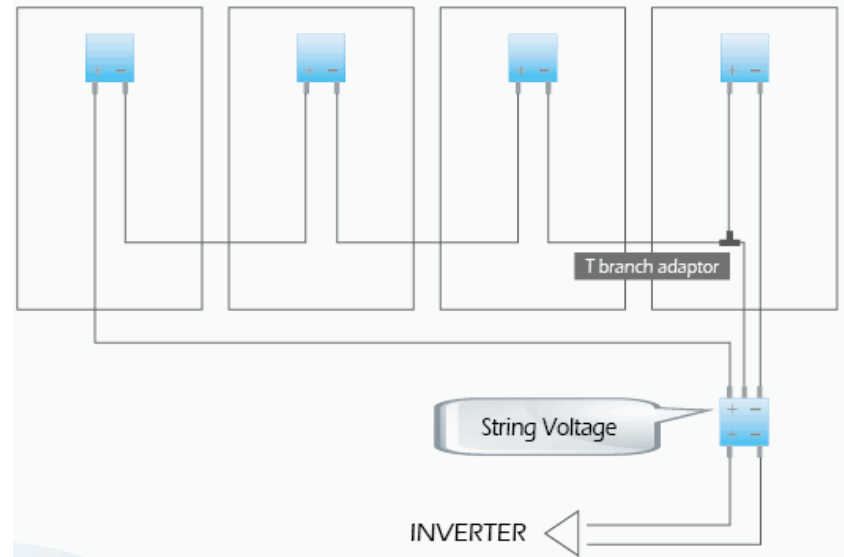
Overvoltage category: III

Water Proof: IP65

Flame Class: UL94-V0



Add-on type monitors string module to get the benefit of lower cost



SmarCB – Add-on Type

Monitoring module current + string voltage

Input Voltage: DC6V~DC60V

Input Voltage: DC850V

Maximum input current: 12A

Maximum module power 300W

Operation tempt.: -40°C ~ +85°C

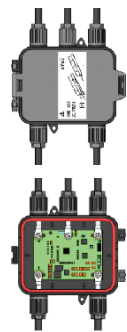
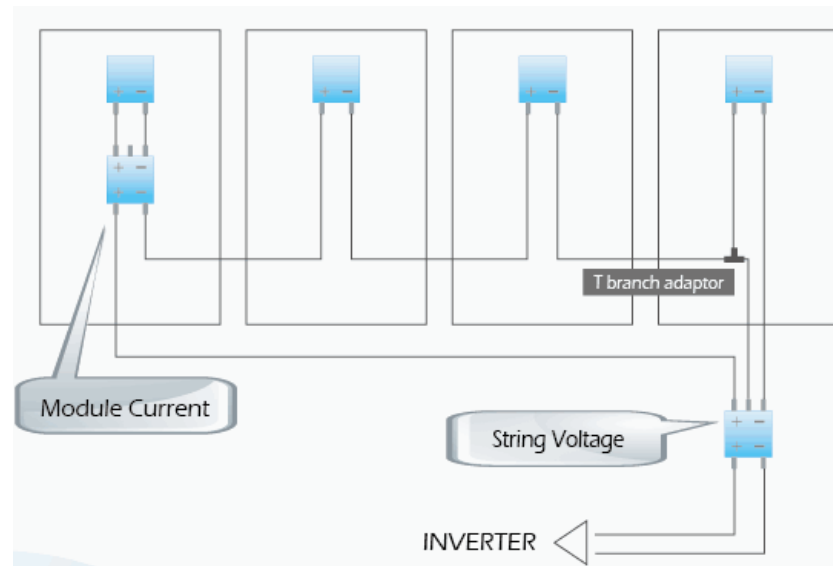
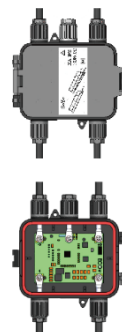
Overvoltage category: III

Water Proof: IP65

Flame Class: UL94-V0

Add-on type provides module current and string voltage monitoring function.

Multi-parameter reference to help analyzing system efficiency .



Smart Power Manager – Compare to the other monitoring systems

Compare to the other monitoring system		
	Soyo	Other
System Monitoring Analysis	O	O
Inverter Monitoring	O	O
Module Monitoring	O	X
Module Breakdown Caution	O	X
Location of Breakdown	O	X
Monitoring on Cell Phone	O	X
Un-regularity Analysis of System	O	X
Smart Power-Saving Analysis	O	X
Customized Power System Integration	O	X
Total Solution for Power system Installation and Management	O	X

PRODUCT SUPERIORITY



Safety:

All of the products designed to reach TUV & UL standard.



Functionality:

All of the product designed for customers actual need.



Efficiency:

Least contact resistance, minimizing heat rising, minimizing power loss, Plug & Play.



Cost Down:

Easy installation design to save labor and material expenses.



Continuous Innovation:

Over 6-year experienced R&D technic and active attitude create the fastest and the most efficient service and quality.

COMPANY SUPERIORITY



Strong R&D Capability



Sharp-Witted Marketing Capability



Advanced Product Design Capability





Thank You

Sales Representative : **Tiffany Hsu**

Email: tiffany@soyolink.com

Tel: +886-3-3216099/ Mobile phone: +886-977413037

www.soyolink.com

www.taiwantrade.com.tw/soyolink



Soyo Link Energy Co.,Ltd.
www.soyolink.com